

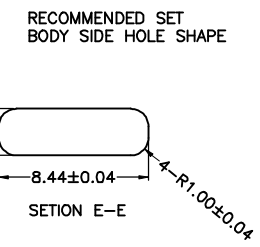
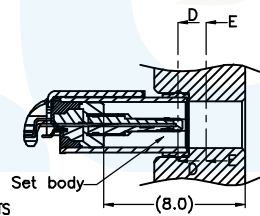
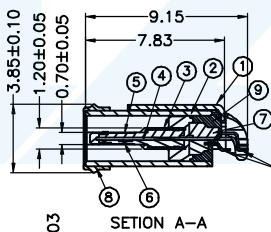
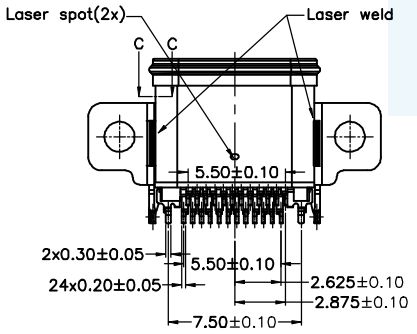
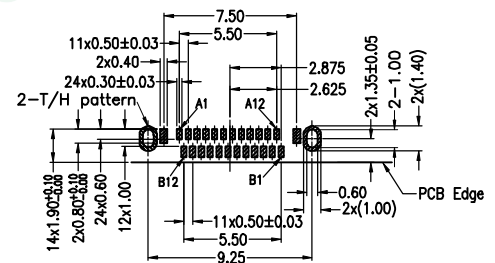
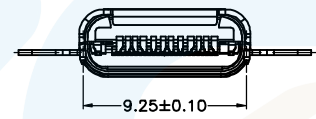
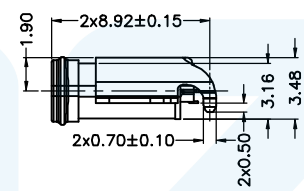
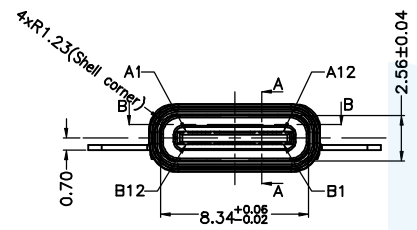
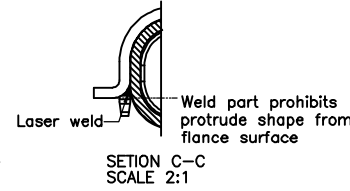
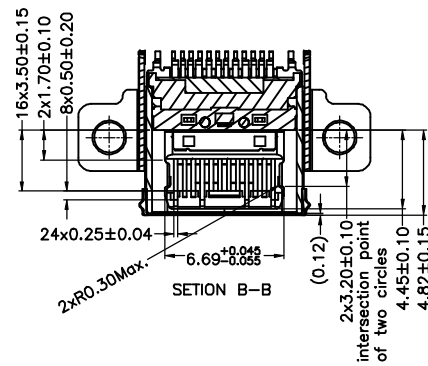
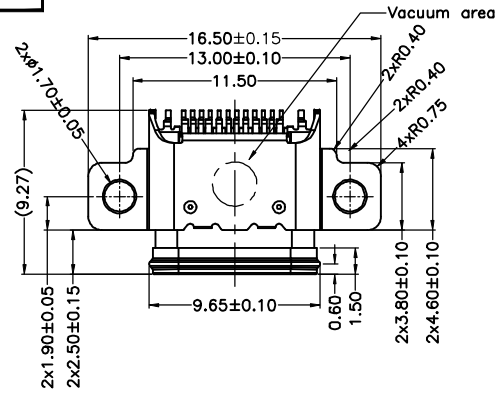
RoHS
Compliant

ZONE	E C N . N O .	DESCRIPTION	DRAWING	DATE
A		INITIAL	林生财	2020.02.18

Remark:
 1.MECHANICAL PERFORMANCE.
 1-1.INSERTION FORCE: 5~20N.
 1-2.EXTRACTION FORCE: 8~20N INITIAL,6~20N AFTER TEST;
 1-3.DURABILITY: 10000 CYCLES.
 2.ELECTRICAL PERFORMANCE.
 2-1. CURRENT RATING:5A MIN FOR VBUS,1.25A MIN FOR OTHERS
 VOLTAGE RATING: 30V MAX.
 2-2. LLCR:VBUS & GND PINS AND OTHER PINS: 40mΩ/PIN MAX.
 2-3.INSULATION RESISTANCE: 100MΩ MIN
 2-4.DIELECTRIC WITHSTAND VOLTAGE,AC 100V FOR 1 MINUTE.
 3.The waterproof grade is IPX8(1.5m depth of water).
 4.PIN DEFINITION:(GND pins(A1,A12,B1,B2) and Mid Plate should connect together in PCB circuit.)

Pin	A1	A2	A3	A4	A5	A6	A7	A8	A9	A10	A11	A12
GND	TX1+	TX1-	VBUS	CC1	D+	D-	SBU1	VBUS	RX2-	RX2+	GND	
GND	RX1+	RX1-	VBUS	SBU2	D-	D+	CC2	VBUS	TX2-	TX2+	GND	
B12	B11	B10	B9	B8	B7	B6	B5	B4	B3	B2	B1	

5.Environmental Characteristics
 Salt Spray: 24H
 IR Reflow: Peak Temperature 240±5°C (Time:30S)
 Operating Temperature Range:-30°C to +85°C.
 Storage Temperature Range:-20°C to +60°C.
 Relative Humidity: 15~70%RH
 Storage Life : 6 Months



RECOMMENDED SET BODY SIDE HOLE SHAPE

NO.	DESCRIPTION	MATERIAL	REMARKS	QTY
9	Liquid Rubber	SILICONE	Color Black	1
8	Rubber	SILICONE	Color Black	1
7	Insertmolding	High Temperature Plastic	Color Black	1
6	Bottom Contact	Copper Alloy, T=0.12	Mating Area: Ni 50u"+Au 15u" Min. Solder Tails: Ni 50u"+Au 1u" Min.	12
5	Top Contact	Copper Alloy, T=0.12		12
4	Mid Plate	Stainless Steel, T=0.15	Ni 40u"Min.+Solder area: Au 1u"Min.	1
3	GND Plate	Stainless Steel, T=0.10	None	2
2	Shell	Stainless Steel, T=0.30	Ni 40u" MIN. UNDER PLATED OVER ALL.	1
1	Frame	Stainless Steel, T=0.30	Ni 40u" MIN. UNDER PLATED OVER ALL.	1

LZG LZG INDUSTRIAL CO. LTD

DRAWING:	林生财	DATE:	2020.02.18	SCALE	1:1
CHECK:	李宏鑫	DATE:	2020.02.18	MATERIAL	*
APPROVAL:	杨进宝	DATE:	2020.02.18	DWG. NO.	
DRAWING NO.	ZB48067-24SBAP-A			SHEET	1/1

PART NAME	WATERPROOF TYPE C 24 PIN	TOLERANCE UNLESS	0.0±0.25	0.°±2°	UNIT:	DRAWING NO.
PART NO.	ZB48067-24SBAP-A	OTHERWISE SPECIFIED:	0.00±0.15 0.000±0.10	0.0°±1° 0.00°±0.5°	mm	