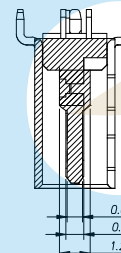
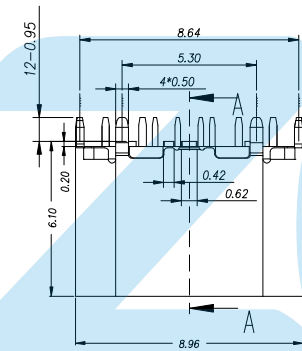
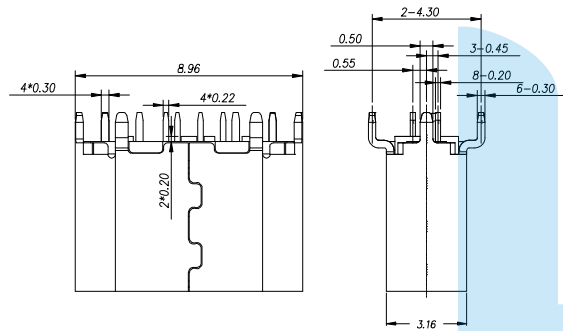
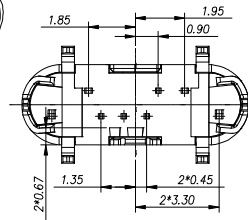
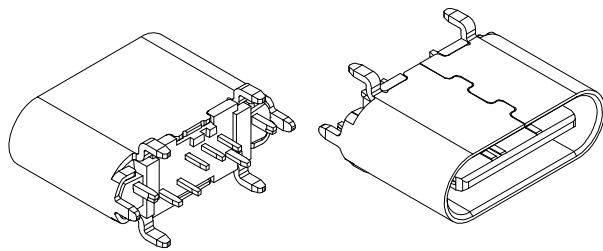
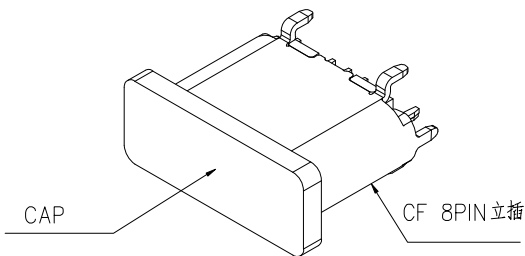
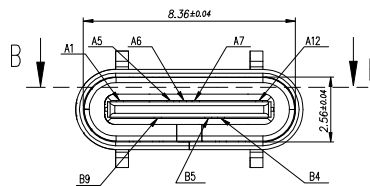


RoHS
Compliant

ZONE	E.C.N.O.	DESCRIPTION	DRAWING	DATE
A		INITIAL	林生财	2023.12.29



剖面图 A-A
比例: 1



- 1.MATERIAL SPECIFICATION:
 1.HOUSING:PA6T BLACK
 2.TERMINAL: COPPER ALLOY
 3.MID PLATE: STAINLESS STEEL
 4.SHELL: STAINLESS STEEL
- 2.PLATING SPECIFICATION:
 2-1.CONTACTS:
 Ni 50u" MIN. UNDER PLATED OVER ALL.
Contact area: Reference table
Soldering area: Reference table
 2-2.SHELL:
 Ni plating 50u" Min
 2-3.MID PLATE:
 Ni plating 50u" Min
- 3.MECHANICAL PERFORMANCE,
 3-1.INSERTION FORCE: 5N~20N.
 3-2.REMOVAL FORCE: 8N~20N
 3-3.DURABILITY: 10000 CYCLES.
- 4.ELECTRICAL PERFORMANCE,
 4-1. VOLTAGE RATING:5 V DC/AC (RMS. max)
 CURRENT RATING:3 AMPS. FOR TOTAL VBUS/GND PINS;
 1.25AMPS FOR CC PIN,0.25 AMPS. FOR ALL OTHER CONTACT.
 4-2. LLOR:
 VBUS & GND PINS AND OTHER PINS: 40mΩ/PIN MAX.
 SHIELD: 50mΩ/MAX.
 LLOR MAX. CHANGE OF ALL PINS: 10mΩ
 4-3.INSULATION RESISTANCE: 100MΩ MIN
 4-4.DIELECTRIC WITHSTAND VOLTAGE,AC 100V FOR 1 MINUTE.
5. ENVIRONMENTAL PERFORMANCE:
 OPERATING TEMPERATURE: -30~C~+85~C.
- 6.IR REFLOW:
 THE PEAK TEMPERATURE ON THE BOARD SHALL
 BE MAINTAINED FOR 10 SECONDS AT 260°C.

LZG® LZG INDUSTRIAL CO. LTD

PART NAME	CF 8PIN 双排立插铁壳六脚黑胶芯	TOLERANCE UNLESS	0.0±0.25	0.1±2°	UNIT: mm	
PART NO.	ZB48079-08DBAP-A	OTHERWISE SPECIFIED:	0.00±0.15 0.000±0.05	0.0±1° 0.00±0.5°		

DRAWING:	林生财	DATE:	2023.12.29	SCALE	1:1
CHECK:	李宏鑫	DATE:	2023.12.29	MATERIAL	*
APPROVAL:	杨进宝	DATE:	2023.12.29	DWG. NO.	
DRAWING NO.	ZB48079-08DBAP-A			SHEET	1/1