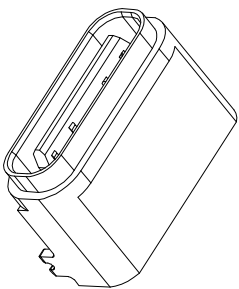
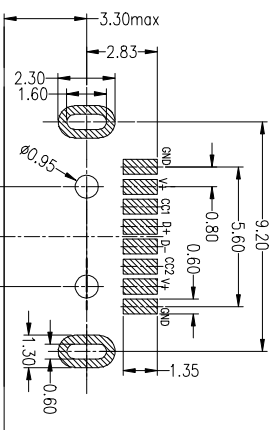
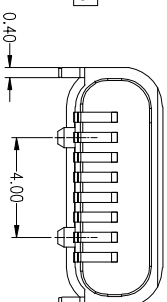
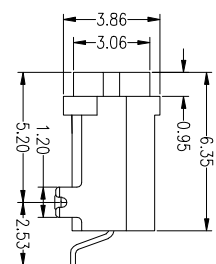
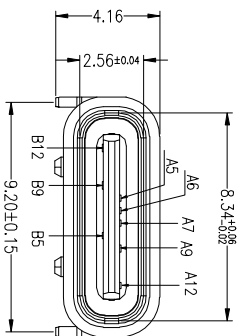


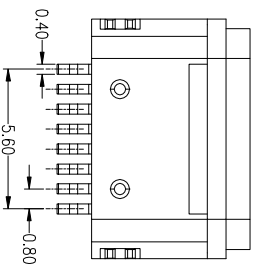
Ø3.0 PICK AREA



3D VIEW



RECOMMEND PCB LAYOUT
TOL=±0.05 (TOP VIEW)



Type c Pin Assignments

PIN	SIGNAL NAME	PIN	SIGNAL NAME	NO.	DESCRIPTION	MATERIAL	REMARKS	QTY
A5	CC1			4	LATCH	STAINLESS STEEL		1
A6	DP1			3	SHELL	ZINC ALLOY	MATTE NICKEL PLATING	1
A7	DN1	B12	GND	2	CONTACT	COPPER ALLOY	GOLD PLATING	8
A9	VBUS	B9	VBUS	1	HOUSING	HIGH TEMPERATURE PLASTIC 94V-0	COLOR BLACK	1
A12	GND	B5	CC2					

ZONE	ECN. NO.	DESCRIPTION	DRAWING	DATE
A		INITIAL	林桂树	2020.02.18

SPECIFICATIONS:

1. ELECTRICAL:
 - 1-1: CURRUENT RATING: VBUS AND GND CONTACTS RATED AT 3A Max VBUS AND GND CONTACTS RATED AT 0.5A Min 0.9amps Max for all other contact.
 - PARALLELED FOR A TOTAL OF 5A;
 - 1-2: INITIAL CONTACT RESISTANCE: 40 MEGOHMS
 - 1-3: DIELECTRIC WITHSTANDING VOLTAGE: 100V AC MIN;
2. MECHANICAL CHARACTERISTICS:
 - 2-1: MATING FORCE: 5~20N
 - 2-2: UNMATING FORCE: 8~20N (INITIAL), 6~20N (AFTER 10000 CYCLES)
 - 2-3: FREQUENCY: 200±50 CYCLES/HOUR, 10000 CYCLES
 - 2-4: OPERATING TEMPERATURE: -40~80°.
3. WATERPROOF: IP-X5.



LZG INDUSTRIAL CO., LTD

PART NAME WATERPROFF TYPE C 8PIN
PART NO. ZB48037-08SBAP-A

TOLERANCE UNLESS OTHERWISE SPECIFIED:
0.04±0.3
0.00±0.1
0.000±0.05

0.1±0.2
0.07±0.1
0.00±0.5

UNIT: mm

DRAWING NO.

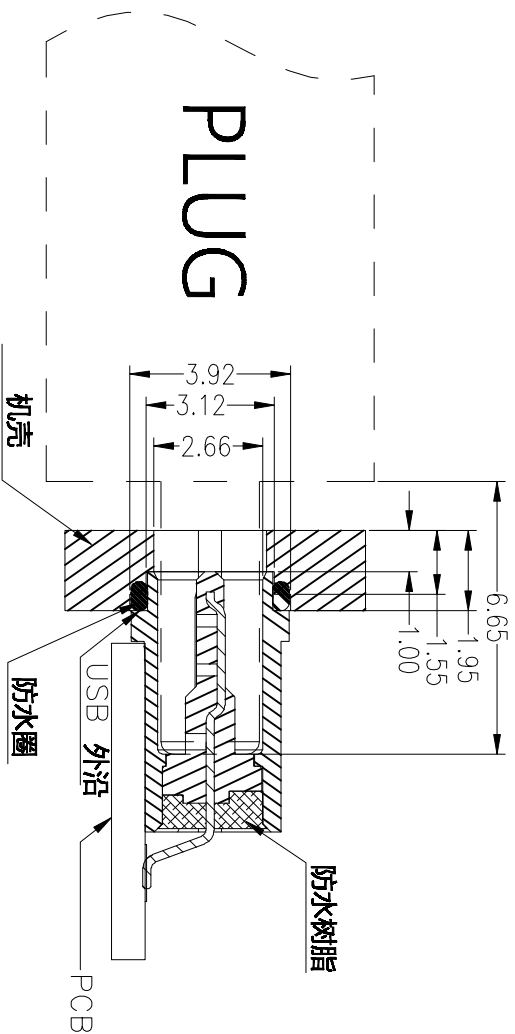
DATE: 2020.02.18

SCALE 1:1

F E D C B A

RoHS
Compliant

ZONE		DESCRIPTION		DRAWING		DATE	
A		INITIAL		林生财		2020.02.18	



防水原理：机壳压缩防水圈使其紧密贴在 USB 外沿上。
(防水圈厚度 0.7，压缩到 0.4)

产品防水机构示意图

LZG		LZG INDUSTRIAL CO. LTD	
PART NAME	WATERPROFF TYPE C 8PIN	TOLERANCE UNLESS OTHERWISE SPECIFIED:	0.0±0.3 0.00±0.1 0.000±0.05
PART NO.	ZB48037-08SBAP-A	0.1±0.2 0.07±0.1 0.007±0.5	UNIT: mm

DRAWING:	林生财	DATE:	2020.02.18	SCALE	1:1
CHECK:	李松德 <td>DATE:</td> <td>2020.02.18<td>MATERIAL</td><td>*</td></td>	DATE:	2020.02.18 <td>MATERIAL</td> <td>*</td>	MATERIAL	*
APPROVAL:	林生财 <td>DATE:</td> <td>2020.02.18<td>DWG. NO.</td><td></td></td>	DATE:	2020.02.18 <td>DWG. NO.</td> <td></td>	DWG. NO.	
DRAWING NO.	ZB48037-08SBAP-A	SHEET			2/2