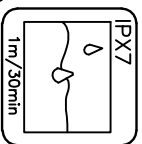
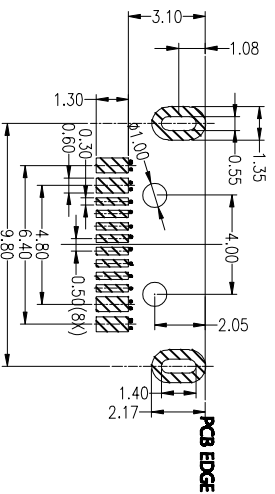
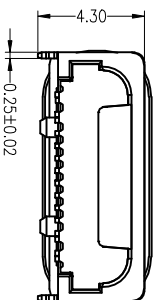
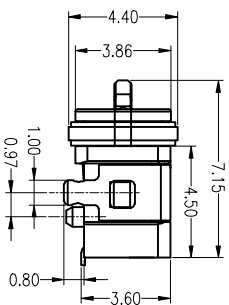
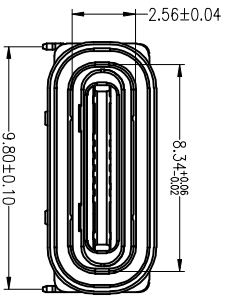


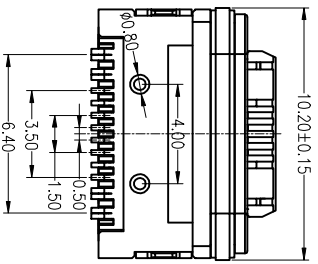
3D VIEW



- SPECIFICATIONS:
- 1-ELECTRICAL:
 - 1-1:CURRENT RATING:
 - VBUS AND GND CONTACTS RATED AT 3A Max
 - VBUS AND GND CONTACTS RATED AT 0.5A Min
 - 0.9amps Max:for all other contact.
 - PARALLELED FOR A TOTAL OF 5A;
 - 1-2:INITIAL CONTACT RESISTANCE:40 MEGOHMS
 - 1-3:DIELECTRIC WITHSTANDING VOLTAGE:100V AC MIN;
 - 2:MECHANICAL CHARACTERISTICS:
 - 2-1:MATING FORCE:5~20N
 - 2-2:UNMATING FORCE:8~20N(INITIAL),
 - 6~20N(AFTER 10000 CYCLES)
 - 2-3:FREQUENCY: 500±50 CYCLES/HOUR;10000 CYCLES
 - 2-4:OPERATING TEMPERATURE:-40~80°;
 - 2-5:Salt fog Test: 48 Hours.
 - 3: WATERPROOF: IP-X7.



RECOMMEND PCB LAYOUT
TOL=±0.05



Type c Pin Assignments

6	HOUSING	HIGH TEMPERATURE PLASTIC 94V-0	COLOR BLACK	1
5	RUNNING RING	SILICONE	COLOR RED	1
4	MIDDLE PLATE	STAINLESS STEEL		1
3	SHELL	STAINLESS STEEL	MATITE TIN PLATING	1
2	CONTACT	COOPER ALLOY	GOLD PLATING	16
1	OUT SHELL	HIGH TEMPERATURE PLASTIC 94V-0	COLOR BLACK	1

PIN	SIGNAL NAME	PIN	SIGNAL NAME
A1	GND	B12	GND
A4	VBUS	B9	VBUS
A5	CCI	B8	SBUS2
A6	DP1	B7	DN2
A7	DN1	B6	DP2
A8	SBUS1	B5	CC2
A9	VBUS	B4	VBUS
A12	GND	B1	GND

LZG INDUSTRIAL CO., LTD

PART NAME	WATERPROOF TYPE C 16 PIN	TOLERANCE UNLESS OTHERWISE SPECIFIED:	0.0±0.3 0.00±0.1 0.000±0.05	0.1±2° 0.0±1° 0.00±0.5°	UNIT:	mm	DRAWING NO.	ZB48036-16SBAP-A	SHEET	1/2
PART NO.	ZB48036-16SBAP-A									

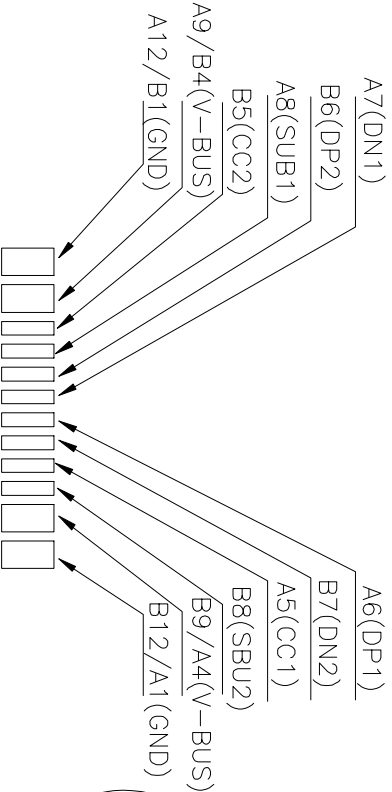
ZONE	ECN NO.	DESCRIPTION	DRAWING	DATE
A		INITIAL	林生财	2020.02.18

4 3 2 1

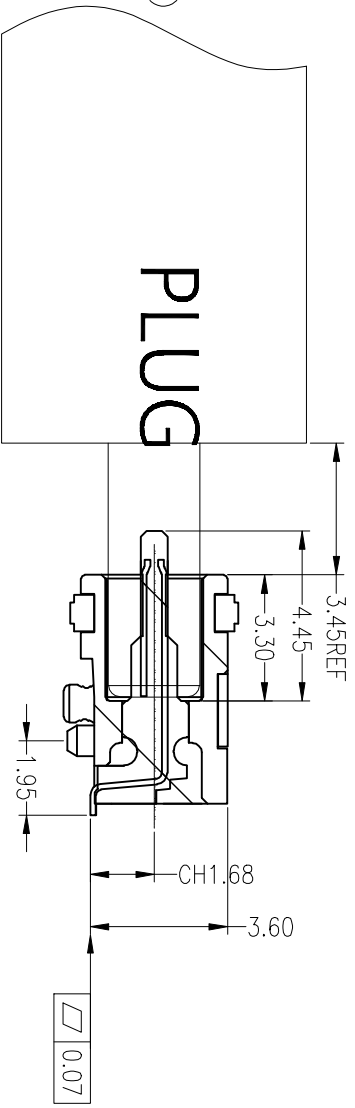
F E D C B A

RoHS
Compliant

ZONE		DESCRIPTION		DRAWING		DATE	
A	ECN. NO.	INITIAL		林生財		2020.02.18	



CIRCUIT DIAGRAM



SECTION A-A

LZG LZG INDUSTRIAL CO. LTD

PART NAME	WATERPROOF TYPE C 16 PIN	TOLERANCE UNLESS OTHERWISE SPECIFIED:	0.04±0.3 0.005±0.1 0.000±0.05	0.±.27 0.0±.1 0.00±0.5	UNIT: mm	DRAWING NO.	ZB48036-16SBAP-A	SHEET	2/2
-----------	--------------------------	---------------------------------------	-------------------------------------	------------------------------	-------------	-------------	------------------	-------	-----

F E D C B A