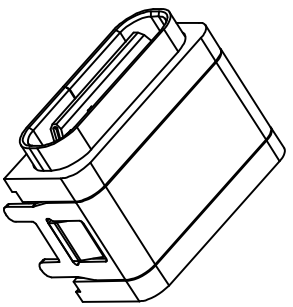
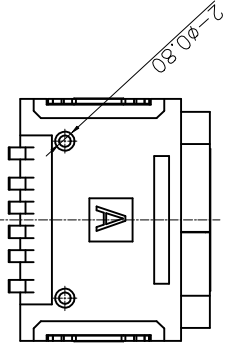
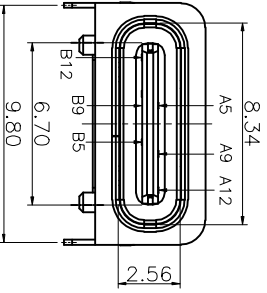
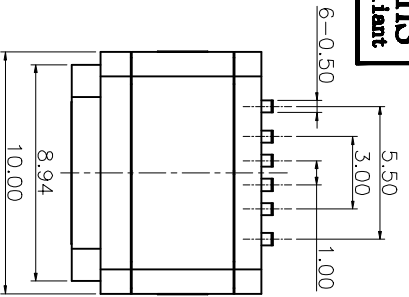
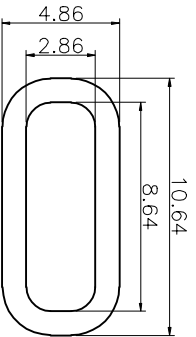
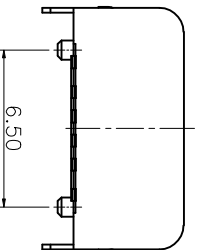
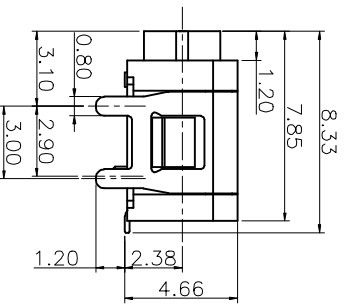


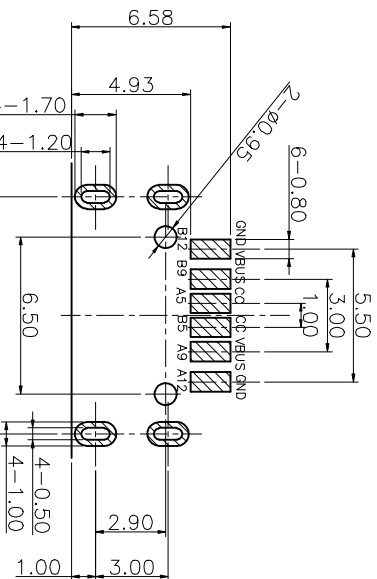
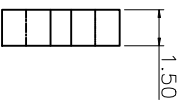
RoHS
Compliant



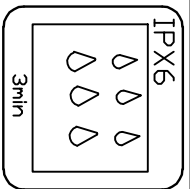
3D VIEW



建议胶圈尺寸



RECOMMENDED PCB LAYOUT(TOP VIEW)
DEFAULT TOLERANCE+/-0.05



ZONE E C N. D. A

INITIAL

DESCRIPTION

DRAWING

DATE

SPECIFICATIONS:
1. ELECTRICAL CHARACTERISTICS:

- 1.1. RATING: 3A;
- 1.2. CONTACT RESISTANCE: 30 mΩ MAX.(INITIAL);
- 1.3. DIELECTRIC WITHSTANDING: 100V AC MIN.;
- 1.4. INSULATION RESISTANCE: 100MΩ MIN.;
2. DURABILITY: 5,000 CYCLES MIN.;
3. INSERTION FORCE: 5-20N;
4. EXTRACTION FORCE: 8-20N;
5. WATER PROOFNESS: THIS PRODUCT IS BASED ON IPX6.
6. PLUG INTERFACE DIMENSIONS CONFORM TO USB2.0 SPEC.
7. PACKAGING: TAPE & REEL.

结构设计注意:
1. 成品使用时, 如有洗面奶泡沫、牙膏、洗手液、脏污液体, 请在TYPE-C口外面再设计一层外壳, 保护TYPE-C表面金手指不会被脏污覆盖。

PIN	SIGNAL NAME	PIN	SIGNAL NAME
A5	CC1	B12	GND
A9	VBUS	B9	VBUS
A12	GND	B5	CC2

NO.	DESCRIPTION	MATERIAL	REMARKS	QTY
3	SHELL	SUS 304	NICKEL PLATING T=0.30mm	1
2	CONTACT	PHOSPHOR BRONZE	Au/Ni Plating T=0.20mm	6
1	HOUSING	PA10T		1

DRAWING:

DATE: 2020.02.18 SCALE 1:1

CHECK:

DATE: 2020.02.18 MATERIAL

APPROVAL:

DATE: 2020.02.18 DWG. NO.

DRAWING NO.

ZB48019-06SBAP-A SHEET 1/2

LZG INDUSTRIAL CO. LTD

WATERPROOF TYPE C 6PIN

PART NO. ZB48019-06SBAP-A

TOLERANCE UNLESS OTHERWISE SPECIFIED: 0.000±0.05

0.0±0.3
0.00±0.1
0.00±0.5



UNIT: mm

APPROVAL: 李宏鑫

DATE: 2020.02.18

DWG. NO.

SHEET 1/2

F

E

D

C

B

A

4

3

2

1

F

E

D

C

B

A

4

3

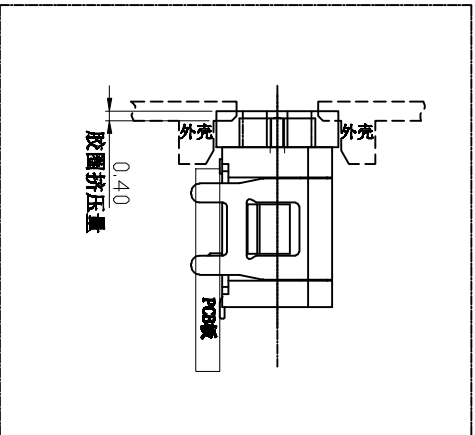
2

1

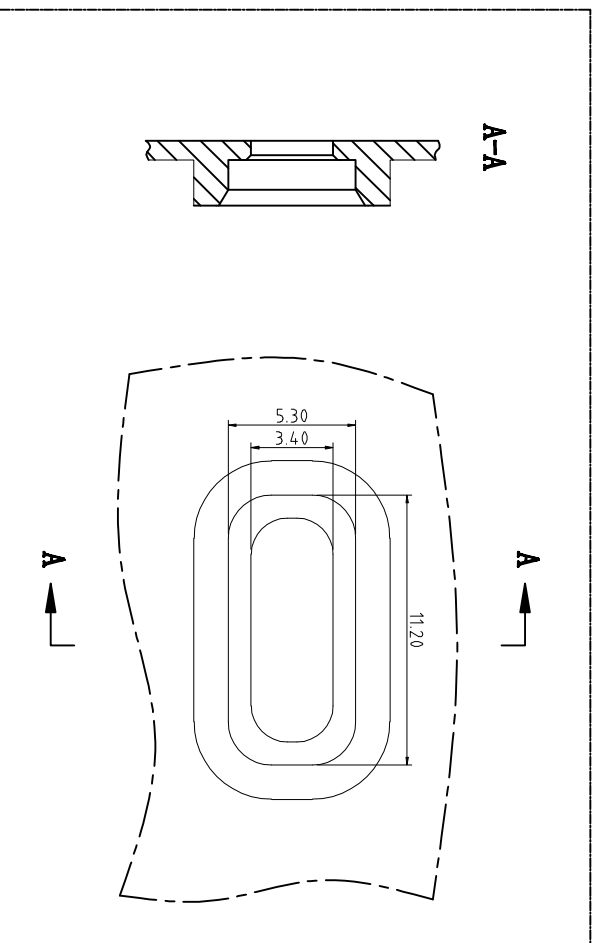
RoHS
Compliant

C		B		A	
ZONE	E C N. I. D.	DESCRIPTION	DRAWING	DATE	
A		INITIAL	林生财	2020.02.18	

组装示意图



外壳参考设计图



LZG INDUSTRIAL CO., LTD

PART NAME WATERPROOF TYPE C 6PIN
PART NO. ZB48019-06SBAP-A

TOLERANCE UNLESS OTHERWISE SPECIFIED: 0.00±0.05

0.0±0.3
0.00±0.1
0.0±0.1
0.00±0.05

UNIT: mm

DRAWING: CHECK: APPROVAL: DRAWING NO.

林生财 李宏鑫 杨进宝
DATE: 2020.02.18
DATE: 2020.02.18

SCALE MATERIAL DWG. NO. SHEET

1:1 * 2/2

F

E

D

C

B

A

4

3

2

1

4

3

2

1