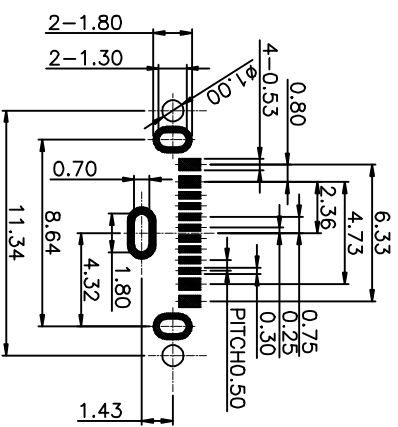
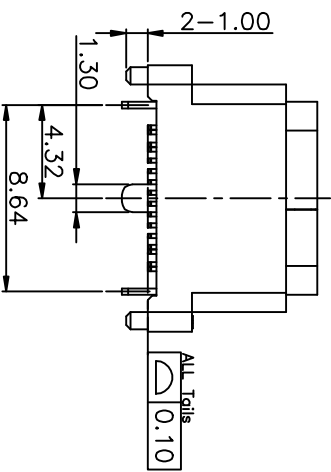
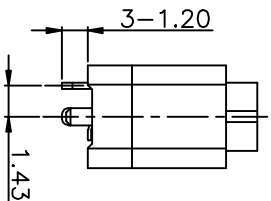
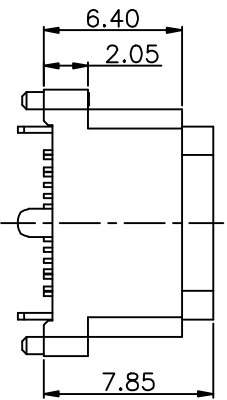


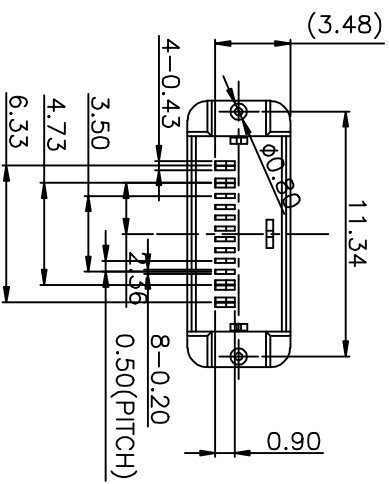
3D VIEW



- SPECIFICATIONS:
1. CURRENT RATING: 3.0A MAX
  2. DIELECTRIC WITHSTAND VOLTAGE: 100VAC
  3. TEMPERATURE RANGE: -30 °C ~ 85 °C
  4. CONTACT RESISTANCE: 40 MILLIONHM MAX
  5. INSULATION RESISTANCE: 100 MEGOHMS MIN.
  6. INSERTION FORCE : 5N~20N
  7. UNMATING FORCE: 8N~20N
  8. DURABILITY:10,000 CYCLES
  9. WATER PROOFNESS:THIS PRODUCT IS BASED ON IPX8.



RECOMMENDED PCB LAYOUTTOP VIEW)  
(GENERAL TOLERANCE:0.05)



结构设计注意:  
成盒使用时, 如有洗面剂泡沫、牙膏、洗手液、脱污液体, 请在IPX8-C口外面再设计一层外壳, 保护IPX8-C表面盒手柄不会被脏污覆盖。

A1	GND	B12	GND
A4	VBUS	B9	VBUS
A5	CC1	B8	SBU2
A6	DP1	B7	DN2
A7	DN1	B6	DP2
A8	SBU1	B5	CC2
A9	VBUS	B4	VBUS
A12	GND	B1	GND

NO.	DESCRIPTION	MATERIAL	COLOR	REMARKS	QTY
7	GAP	HIGH TEMPERATURE PLASTIC	COLOR BLACK		1
6	WATERPROOF RING	SILICA GEL	COLOR BLACK		1
5	SHELL	STAINLESS STEEL	Ni PLATING		1
4	SHIELDING PLATE	STAINLESS STEEL	Ni PLATING		1
3	CONTACT	HIGH CONDUCTIVITY COPPER	Au/Ni PLATED		16
2	SHELL HOUSING	HIGH TEMPERATURE PLASTIC	COLOR BLACK		6
1	HOUSING	HIGH TEMPERATURE PLASTIC	COLOR BLACK		1

**LZG** INDUSTRIAL CO., LTD

PART NAME WATERPROFF TYPE C 16PIN  
PART NO. ZB48003-16SBAP-A

TOLERANCE UNLESS OTHERWISE SPECIFIED:  
0.0±0.3  
0.00±0.2  
0.00±0.05

0.±2°  
0.0°±1°  
0.00°±0.5°

UNIT: mm

DRAWING NO.

DATE: 2020.02.18  
DATE: 2020.02.18  
DATE: 2020.02.18

SCALE 1:1  
MATERIAL \*  
DWG. NO.  
SHEET 1/2

F

E

D

C

B

A

4

3

2

1

4

3

2

1