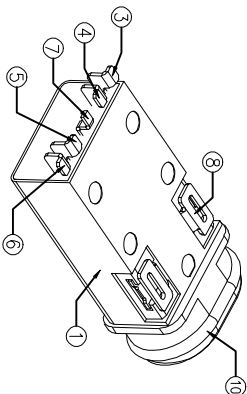
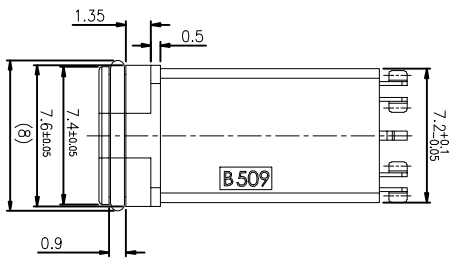
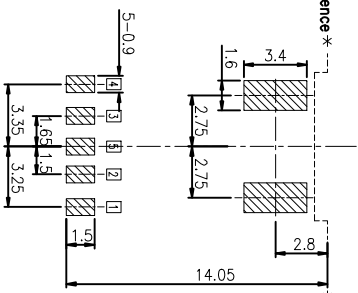
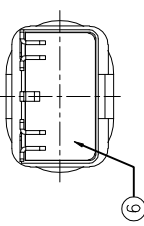
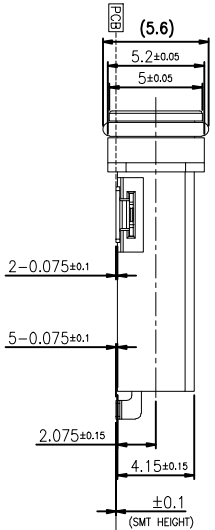
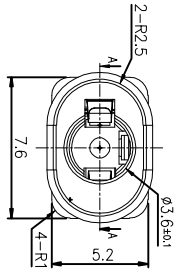


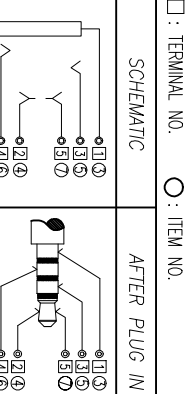
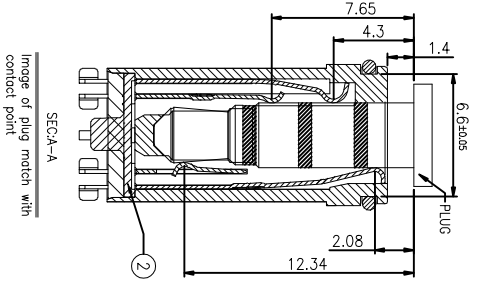
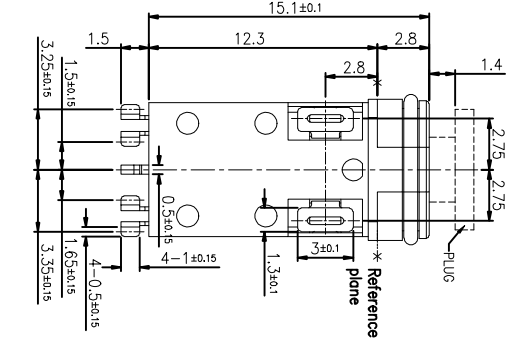
RoHS
Compliant



3D VIEW



Recommended PCB layout
Tolerance: ±0.1 (Top view)



NO.	DESCRIPTION	MATERIAL	REMARKS	QTY
10	OVAL RING	---	---	1
9	BOND	---	---	1
8	TERMINAL	Copper alloy t=0.2	tactH(μm or more)/ZnCd4μ(NiN 2μm or more)/Plding	2
7	TIP SPRING-2	Copper alloy t=0.2	tactH(μm or more)/ZnCd4μ(NiN 0.05μm or more) Plding	1
6	RING SPRING-2	Copper alloy t=0.2	tactH(μm or more)/ZnCd4μ(NiN 0.05μm or more) Plding	1
5	RING SPRING-1	Copper alloy t=0.2	tactH(μm or more)/ZnCd4μ(NiN 0.05μm or more) Plding	1
4	TIP SPRING-1	Copper alloy t=0.2	tactH(μm or more)/ZnCd4μ(NiN 0.05μm or more) Plding	1
3	EARTH SPRING	Copper alloy t=0.2	tactH(μm or more)/ZnCd4μ(NiN 0.05μm or more) Plding	1
2	COVER	PA9T 94V-0	COLOR BLACK	1
1	HOUSING	PA9T 94V-0	COLOR BLACK	1



- SPECIFICATIONS:
- INSULATION RESISTANCE: A VOLTAGE OF 500V D.C. SHALL BE APPLIED TO THE TERMINALS, AFTER WHICH MEASUREMENT SHALL BE MADE. A GAUGE FOR THE MEASUREMENT SHALL BE USED THE INSULATED GAUGE.
 - CONTACT RESISTANCE: 30mΩ OR LESS
 - VOLTAGE PROOF: 500V AC FOR ONE MINUTE
 - DURABILITY: 5,000 INSERTION/REMOVAL CYCLES(MINIMUM)
 - INSERTION FORCE: 0.3KGF~3.0KGF
 - WITHDRAWAL FORCE: 0.3KGF~3.0KGF
 - WATER PROOFNESS: THIS PRODUCT IS CONFORM TO JIS STANDARD IPX7 BY WATERPROOF JACK
 - USING PLUG: φ3.5MM, 4-POLE STEREO EARPHONE(LCH/RCH/GND/MIC)
- PROVIDED THAT THEY CONFORM TO JIS C6560
9.0-RING ASSEMBLY AREA TO MAINTAIN SMOOTH, SHALL HAVE NO BURRS

ZONE	E.C.N. NO.	DESCRIPTION	DRAWING	DATE
A		INITIAL	林生財	2020.02.18

LZG INDUSTRIAL CO., LTD

PART NAME	WATERPROOF φ3.5 PHONE JACK	TOLERANCE UNLESS 0.00±0.20	0.±2°	UNIT: mm	DRAWING NO.	SHEET
PART NO.	ZB23009-07SBAP-A	OTHERWISE SPECIFIED: 0.000±0.10	0.0±0.30	0.0±1°	ZB23009-07SBAP-A	1/1